

# Standard Door Specification / Upgrades



## Kömmerling Doors

'Choices' doors have a high security specification as standard

### Standard Specification:



- A** Kenrick lock with 3 star cylinder
- B** Hook claws top and bottom operate in reverse directions for anti-lift
- C** 2 roller cams providing compression to ensure a reliable weatherproof seal
- D** Steel shootbolts as standard on both leafs
- E** Centre hook claw with smooth locking operation. Provides high level of security in the centre of door
- F** One piece keeps combine with hook claws to provide highly secure locking and non corrosive long lasting performance
- G** Adjustable Dynamic hinge



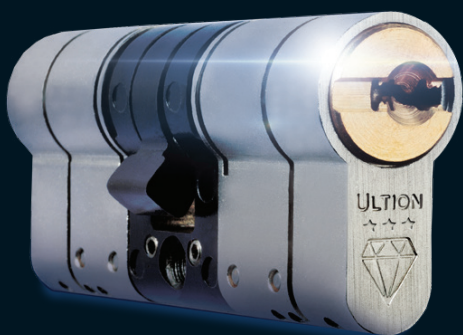
PAS 24 Enhanced Security as standard

### Secured by Design as standard

Subject to the addition of 6.8mm laminate glazing



## ULTION Cylinder upgrade



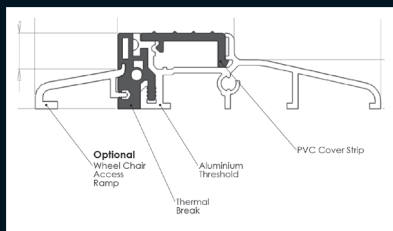
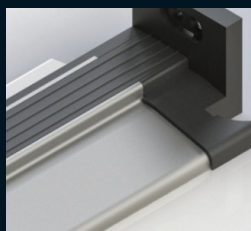
### Features and Benefits

- ✓ Eleven Pin Locking
- ✓ 294,970 Lock Combinations
- ✓ 100,000 Cycle Endurance Test
- ✓ Snap Tested Resistant Sections
- ✓ Drilling, Pick and Bump Tested
- ✓ Molybdenum Alloy Core
- ✓ Available on any new 'Choices' door
- ✓ All Locks can have the same key
- ✓ Single, Double, Sliding and Bi Folding
- ✓ Retro Fit into existing doors

Ultion cylinders are available to fit to any new 'Choices' single, double or bi-fold door and can be retrofitted to existing 'Choices' doors

The basis of the high security is the Molybdenum Alloy Core (Centre section) which as soon as the lock comes under attack, goes into 'Lockdown Mode'. The first two sections are designed to 'snap' off – then the attacker will be confronted with the high security 'core'.

Please note Ultion cylinders are only supplied with 3 keys per set, so additional keys may be required when ordering keyed alike cylinders as part of a set



## Mobility Threshold

Part M thermally broken mobility threshold available in anodised silver or gold with optional access wheel chair ramps